

POZNÁMKY:

- řešení interiéru je nedílnou součástí dokumentace pro provedení stavby
- práce na interiéru bez vzájemné koordinace s ostatními profesemi není možná
- součástí realizační, dílenské a montážní dokumentace bude řešení detailů dodavatele, které zajistí funkčnost a bezpečnost stavby
- prvky interiéru podléhají vzorkování, odsouhlasení architektem a investorem
- dodavatel je povinen upozornit na případné disproporce v možnostech technického a architektonického řešení, výsledné řešení musí být výsledkem dohody dodavatele, architekta a investora a musí být v souladu s platnými zákony, vyhláškami a technickými normami

Číslo	Datum	Popis Revize	Vydal

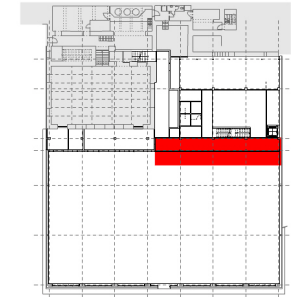
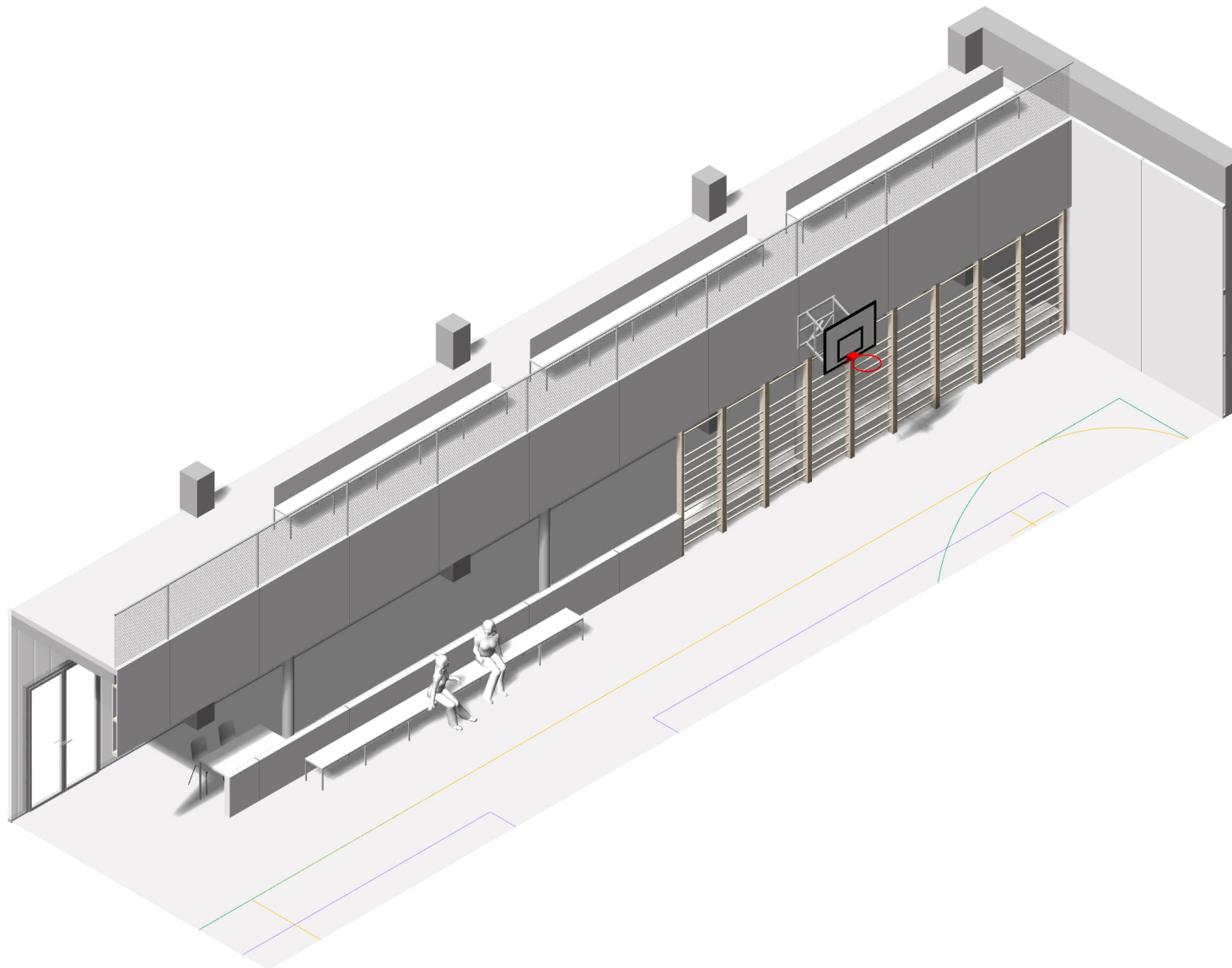
ARCHITEKTONICKÉ ŘEŠENÍ, GENERÁLNÍ PROJEKTANT:
studenýarchitekti s.r.o.
Partyzánská 33
811 03 Bratislava, SK
GSM: +421 905 916 853
E-mail: studeny@ksastudený.sk
www.ksastudený.sk

AUTOŘI:
Ing. Ján Studený, akad.arch
Ing. arch. Maroš Bátora

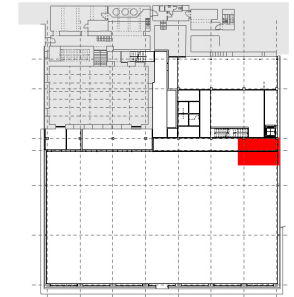
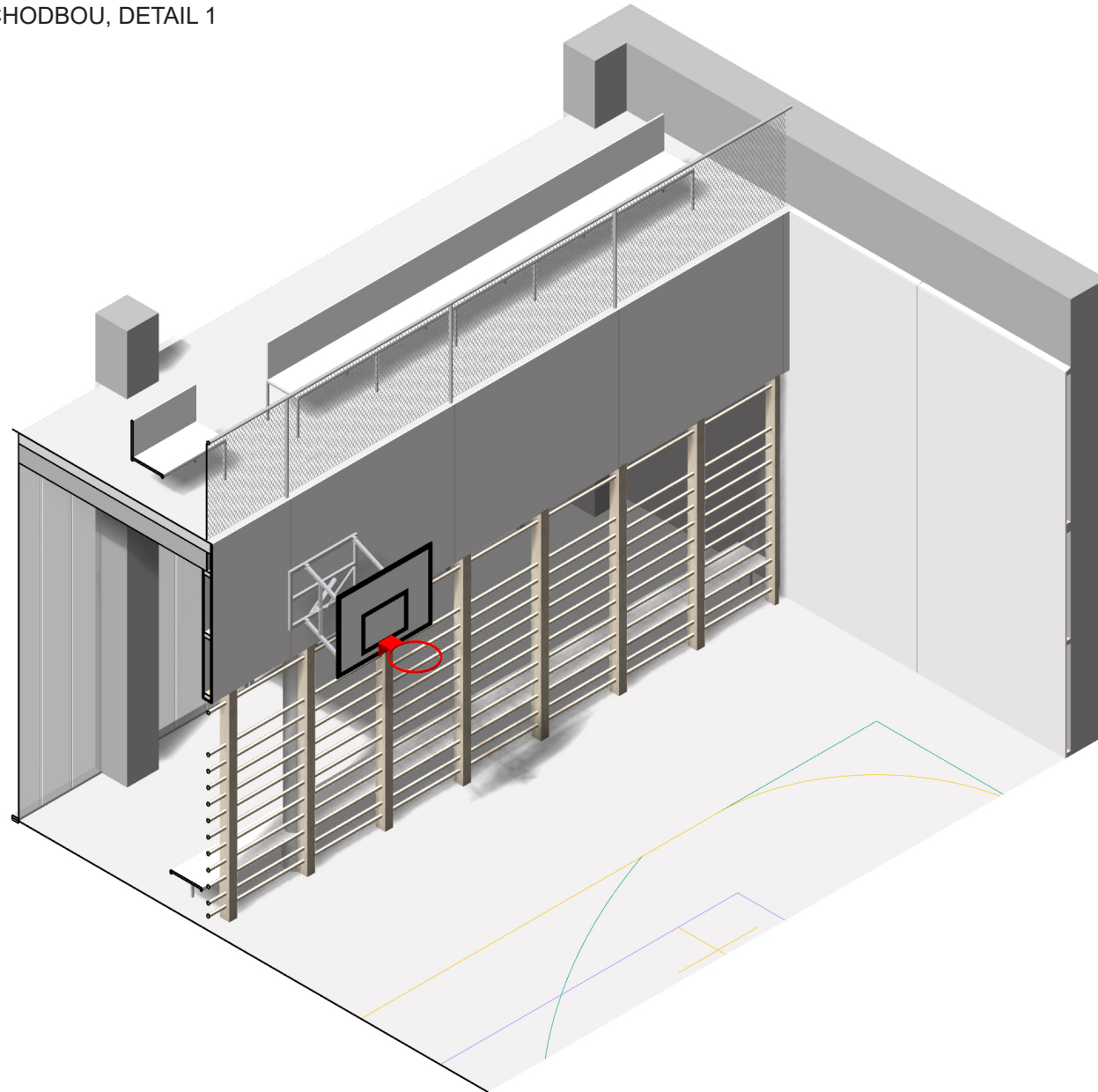
AUTORSKÁ SPOLUPRÁCE NA ARCH. ŘEŠENÍ:
Peter Stec Studio
Mag. arch. Peter Stec, ArtD.

PROJEKTOVÁ A INŽENÝRSKÁ SPOLEČNOST			INTER PLAN		Purkyňova 78a, 612 00 Brno Czech Republic E-mail: info@interplan.cz tel.: +420 541 597 544 fax: +420 541 597 223
DESIGN AND ENGINEERING COMPANY					
ROLE ROLE	JMÉNO NAME	PODPIS SIGNATURE	DATUM VYDÁNÍ VÝKRESU ISSUE DATE	10/2021	
VEDOUcí PROJEKTANT APPROVED	Ing. Tomáš Gryc		FORMÁT SIZE		
ZODPOVĚDNÝ PROJEKTANT CHECKED	Ing. arch. Ján Studený		MĚŘÍTKO SCALE		
VYPRACOVAL DRAWN	Ing. arch. A. Tundérová, Ing. arch. M. Bátora		ZAKÁZKOVÉ Č. CONTRACT NO.	201672/5	
INVESTOR INVESTOR	Královéhradecký kraj, IČO 70889546		STAVEBNÍ ÚŘAD BUILDING OFFICE	MÚ Nová Paka	
NÁZEV PROJEKTU	Sportovní hala pro tělesnou výchovu NOVÁ PAKA		PROFESE	X - INTERIÉRY A VNITŘNÍ ZAŘÍZENÍ	
PROJECT NAME			DISCIPLINE		
SO / PS	SO002 - SPORTOVNÍ HALA		STUPEŇ	DOKUMENTACE PRO PROVÁDĚNÍ STAVBY	
UNIT			DESIGN PHASE		
NÁZEV VÝKRESU	AXONOMETRIE		SOUBOR FILE	201672_5_6_SO002_X005_0.pdf	
DRAWING NAME			POR. I NO.	ARCHIVNÍ Č. ARCHIVE NO.	REVIZE
			005	201672/5-6-SO002-X05/1	1

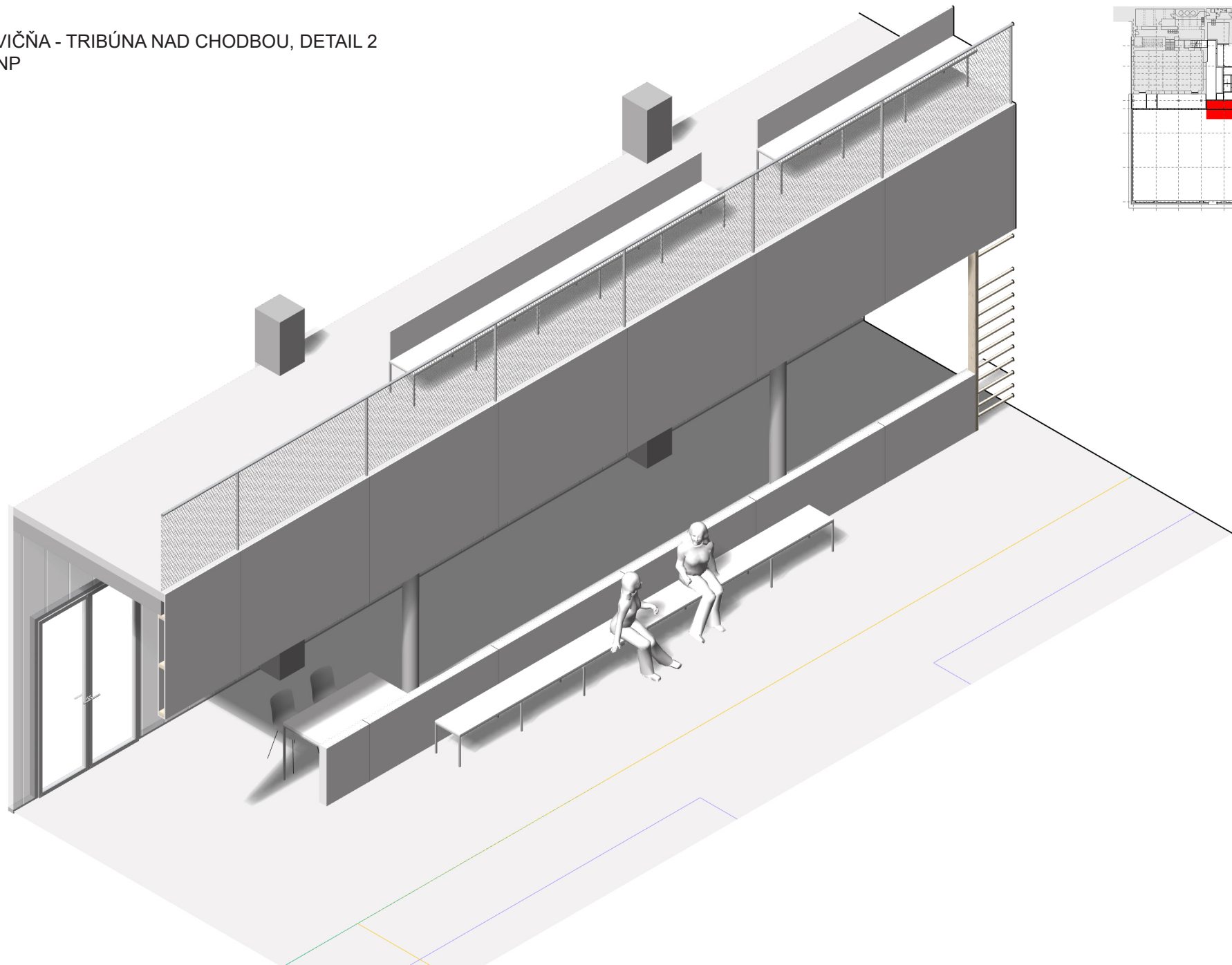
TELOCVIČŇA - TRIBÚNA NAD CHODBOU
1NP - 3NP



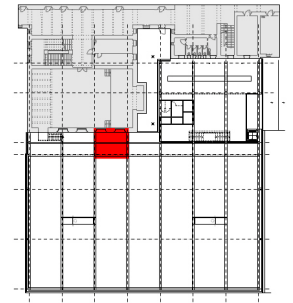
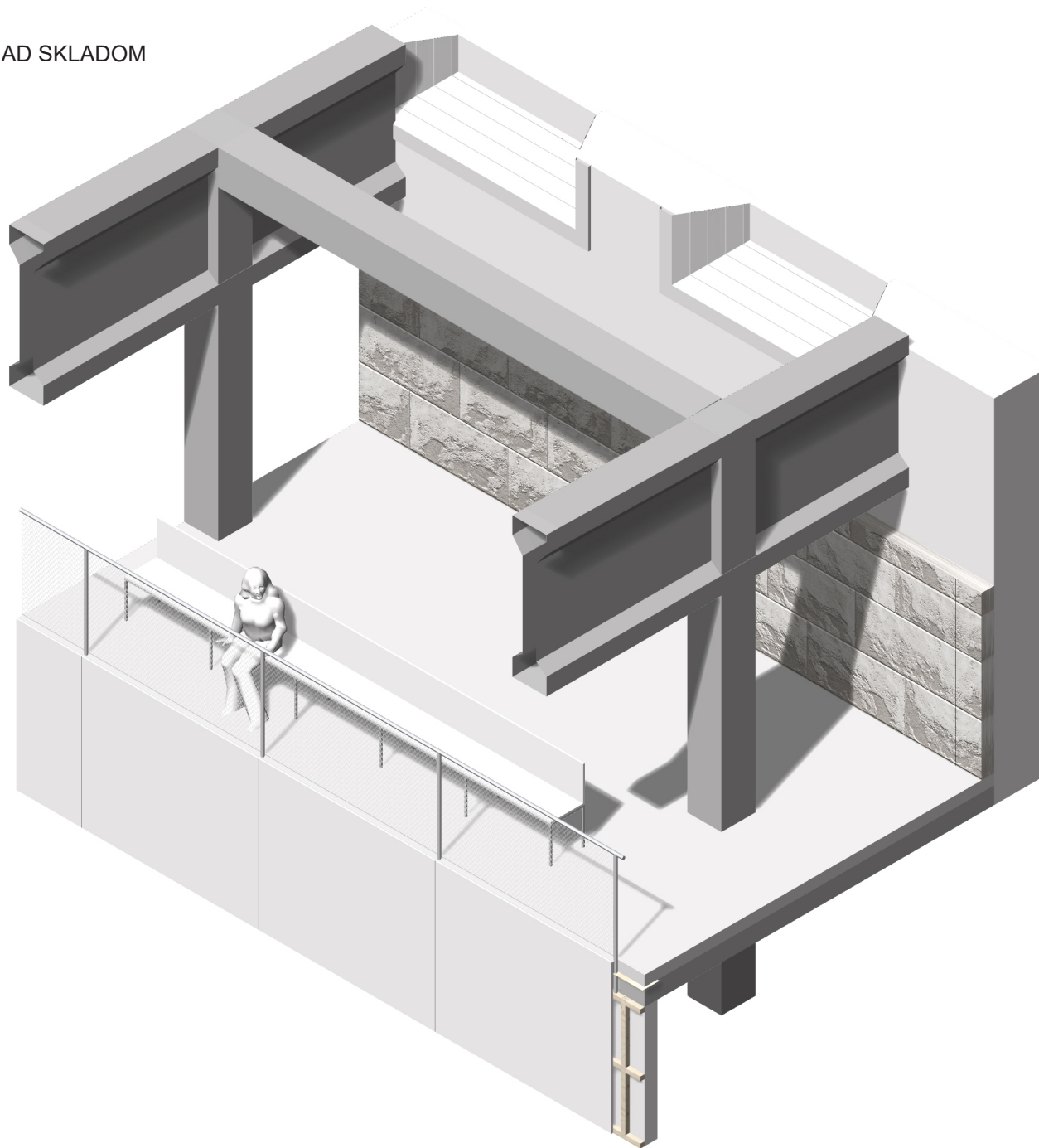
TELOCVIČŇA - TRIBÚNA NAD CHODBOU, DETAIL 1
1NP - 3NP



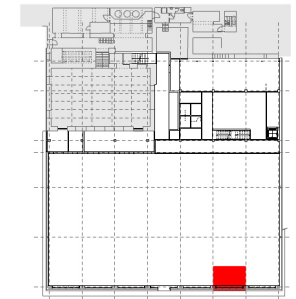
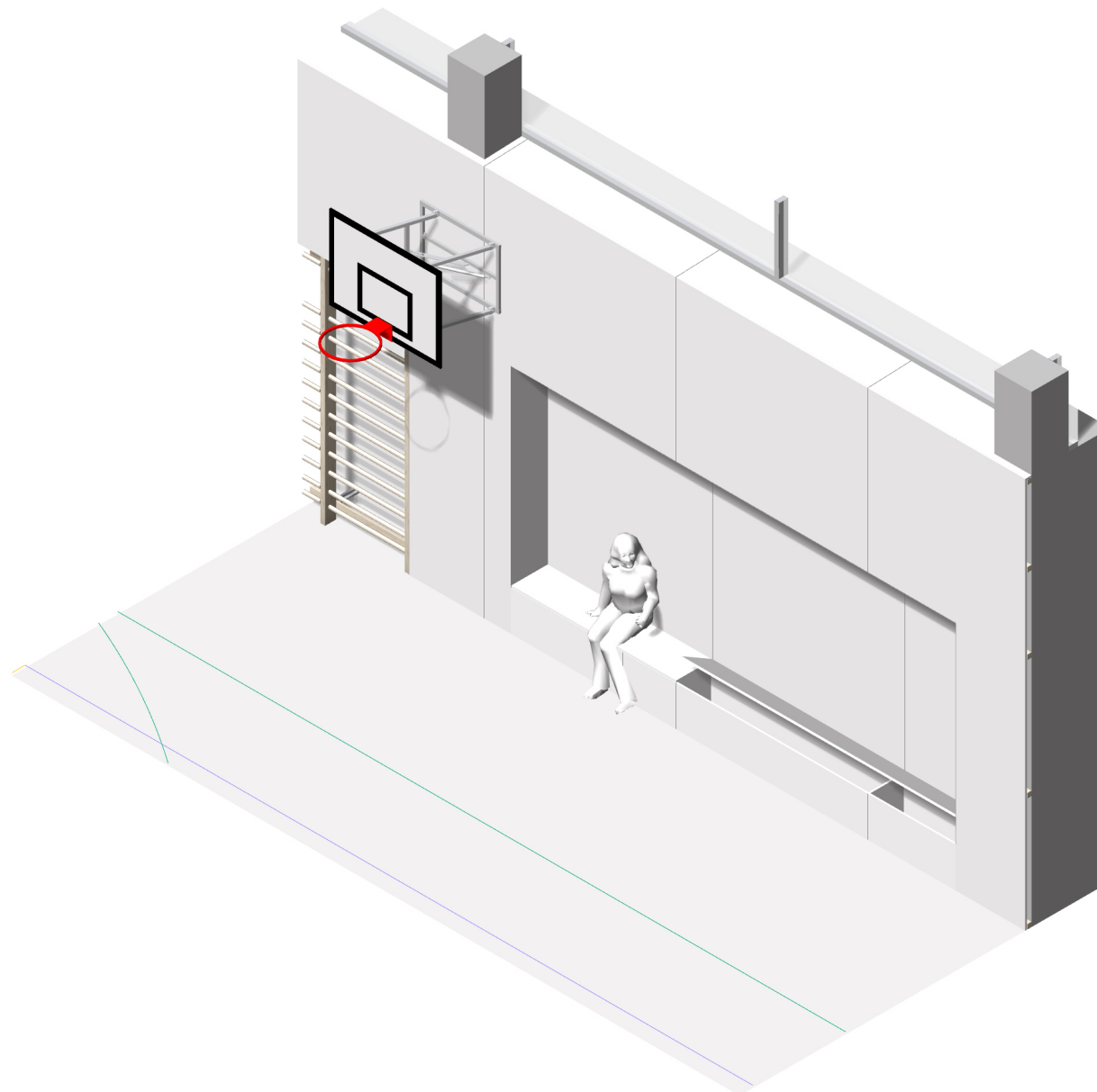
TELOCVIČŇA - TRIBÚNA NAD CHODBOU, DETAIL 2
1NP - 3NP



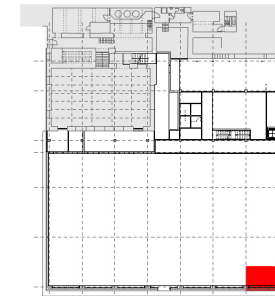
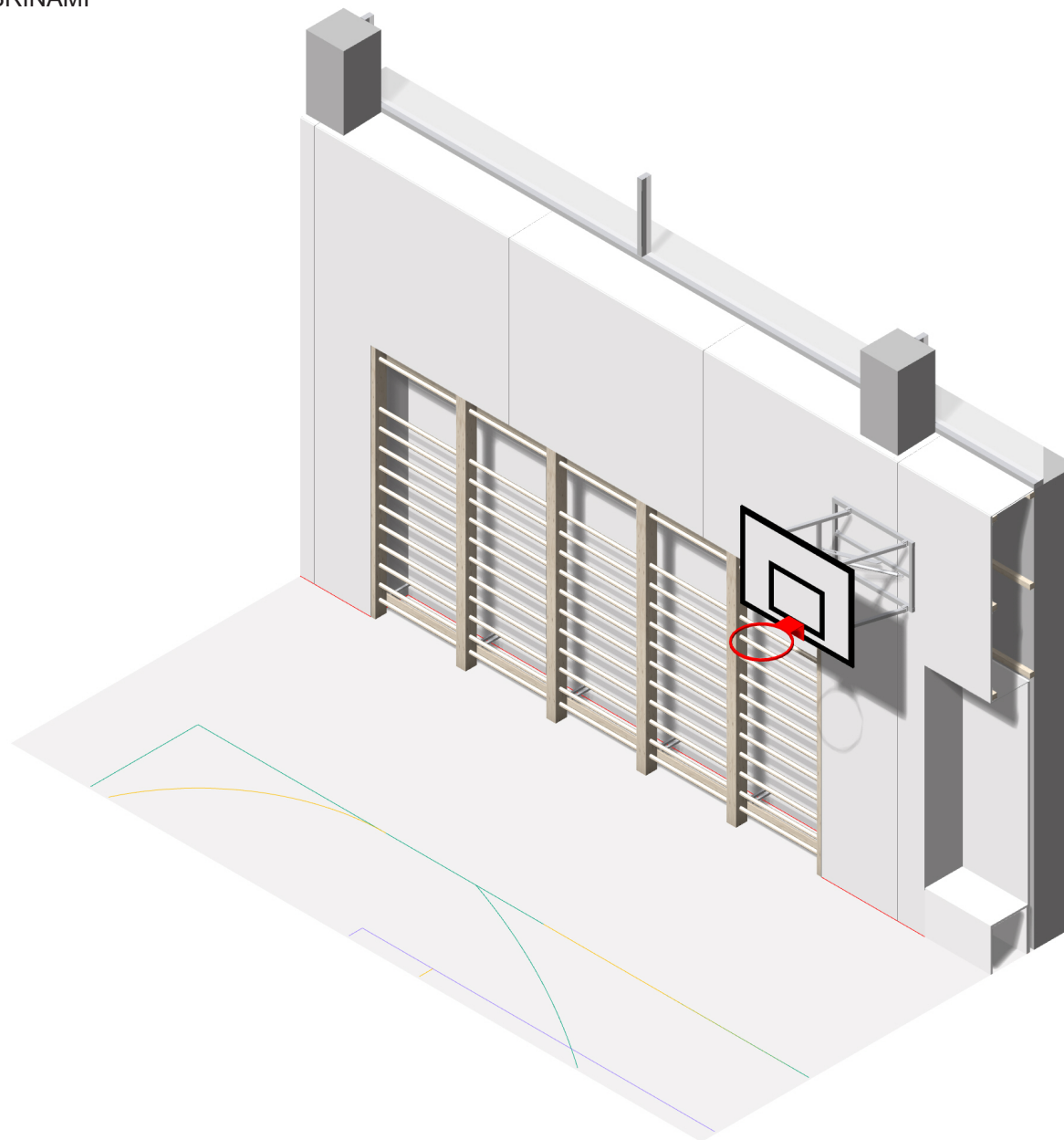
TELOCVIČŇA - TRIBÚNA NAD SKLADOM
1NP - 3NP



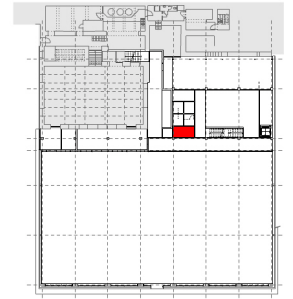
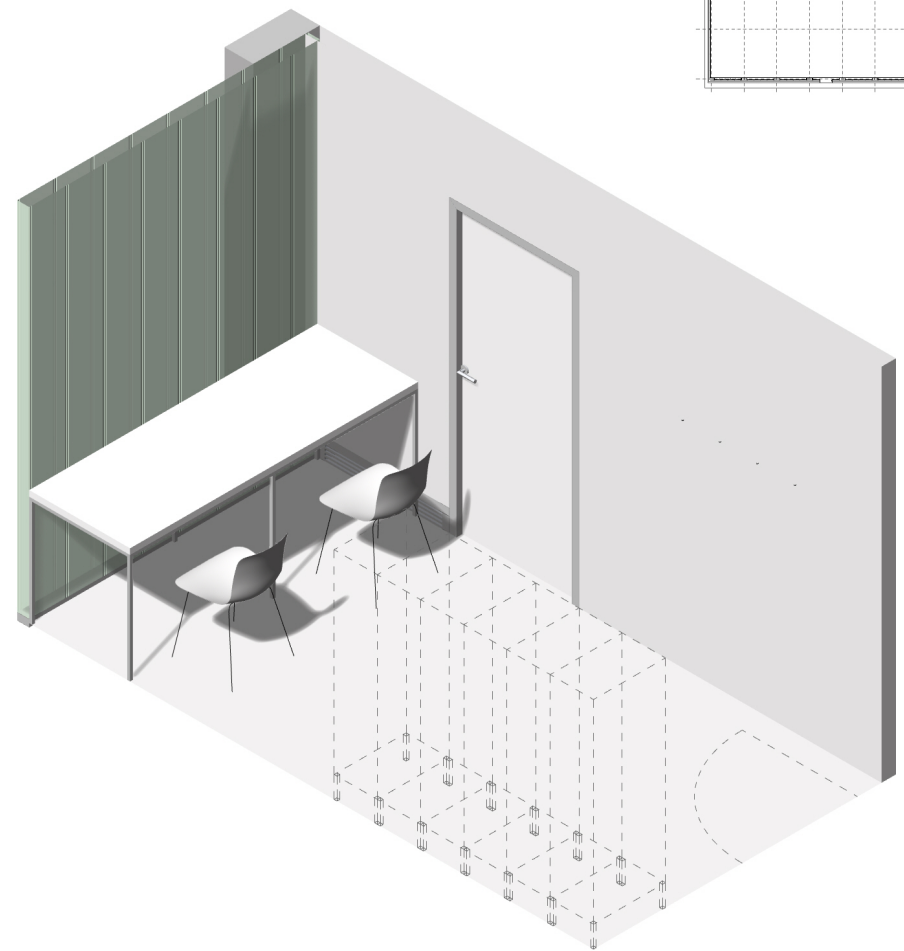
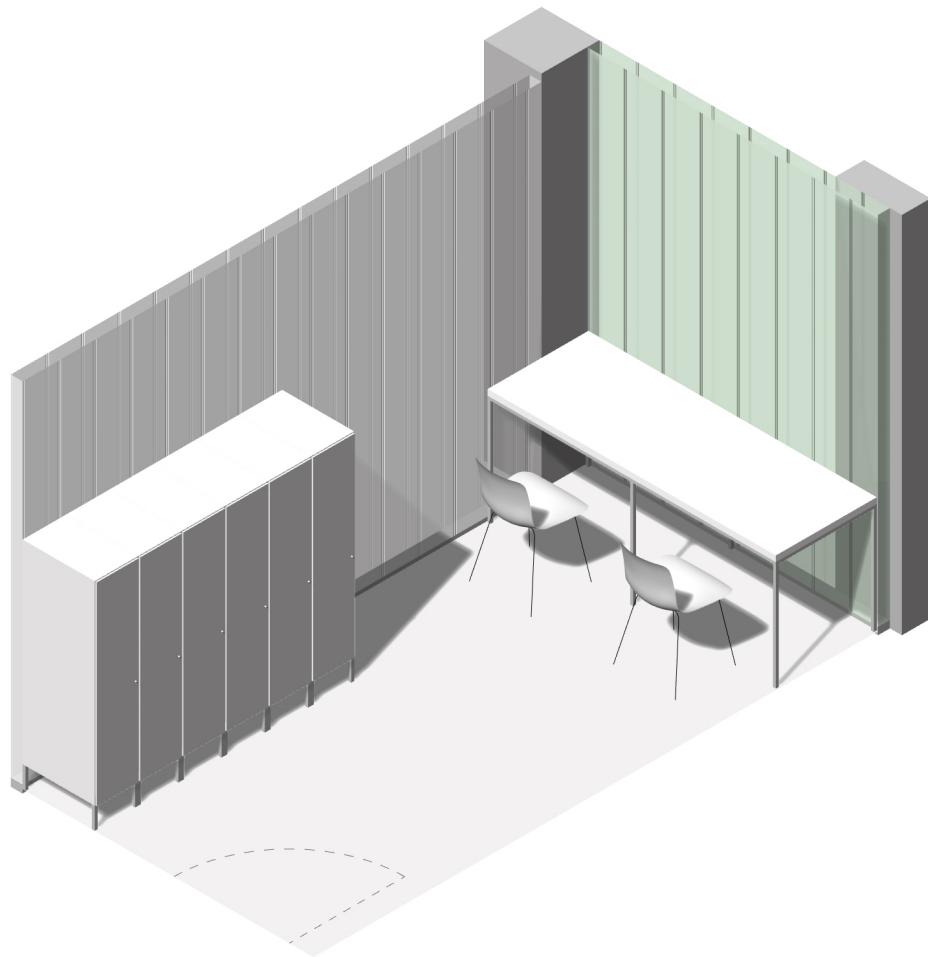
TELOCVIČŇA - SEDÍLIA S LAVICOU
1NP



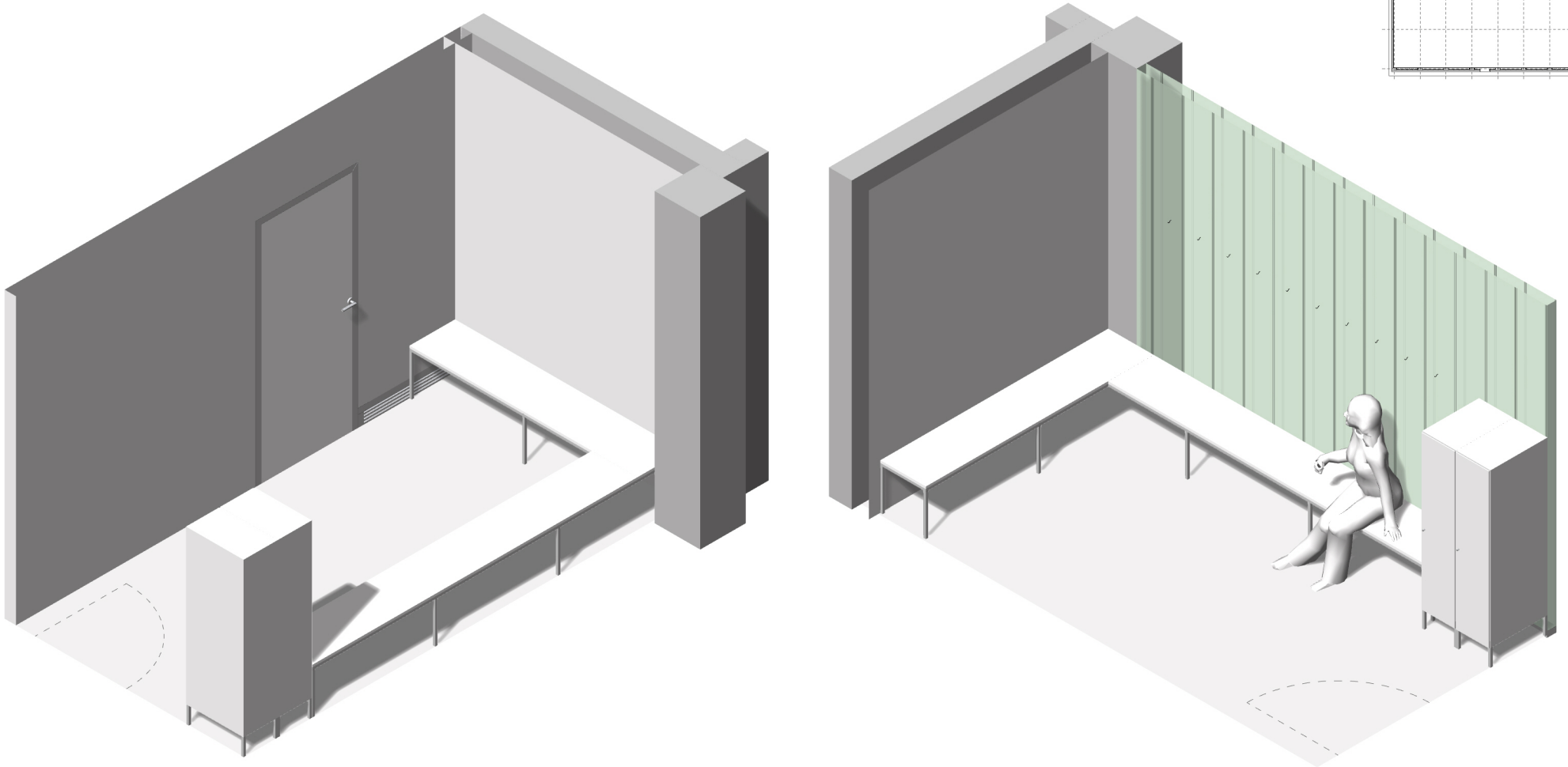
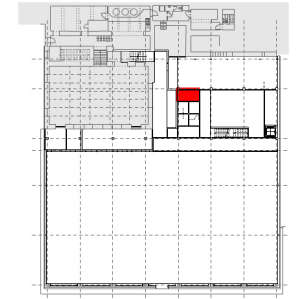
TELOCVIČŇA - SEDÍLIA S REBRINAMI
1NP



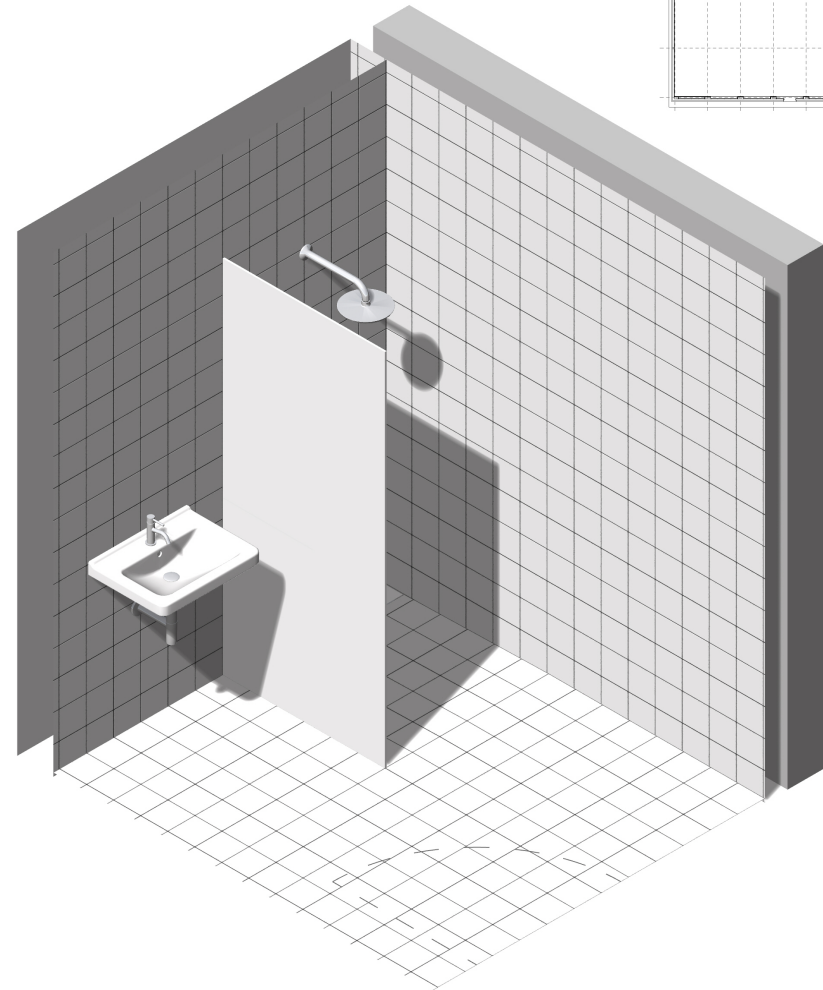
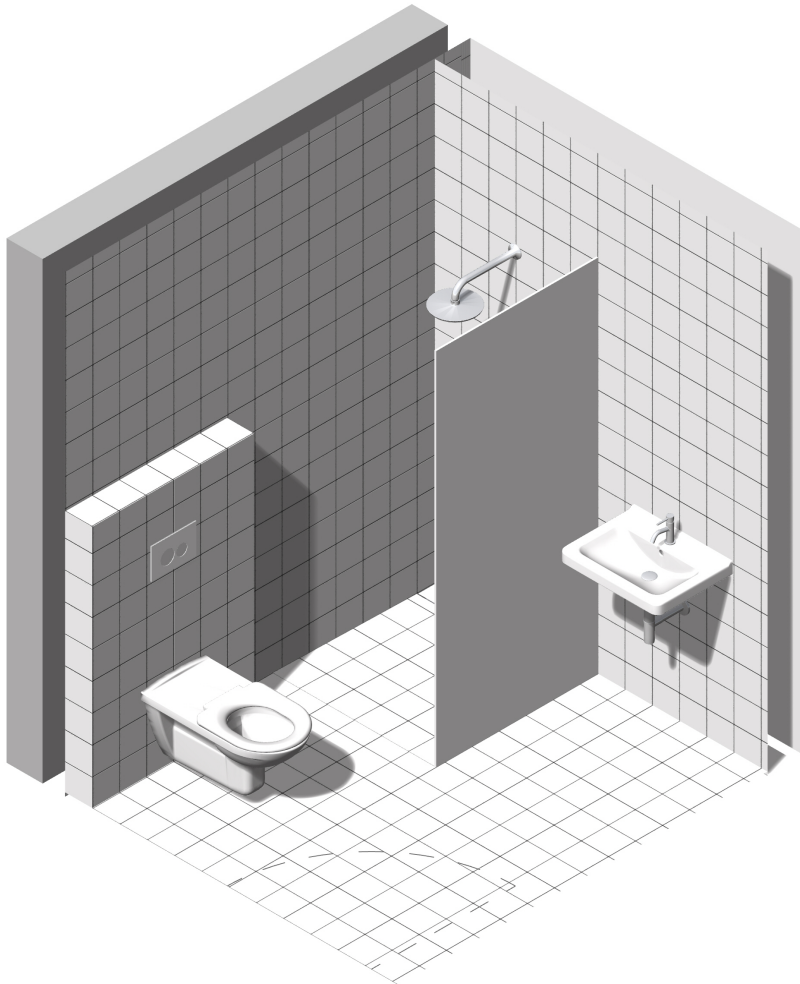
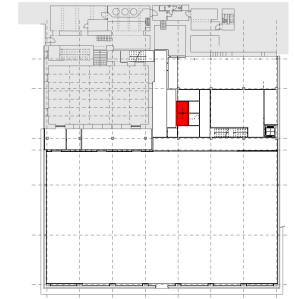
KABINET
1NP



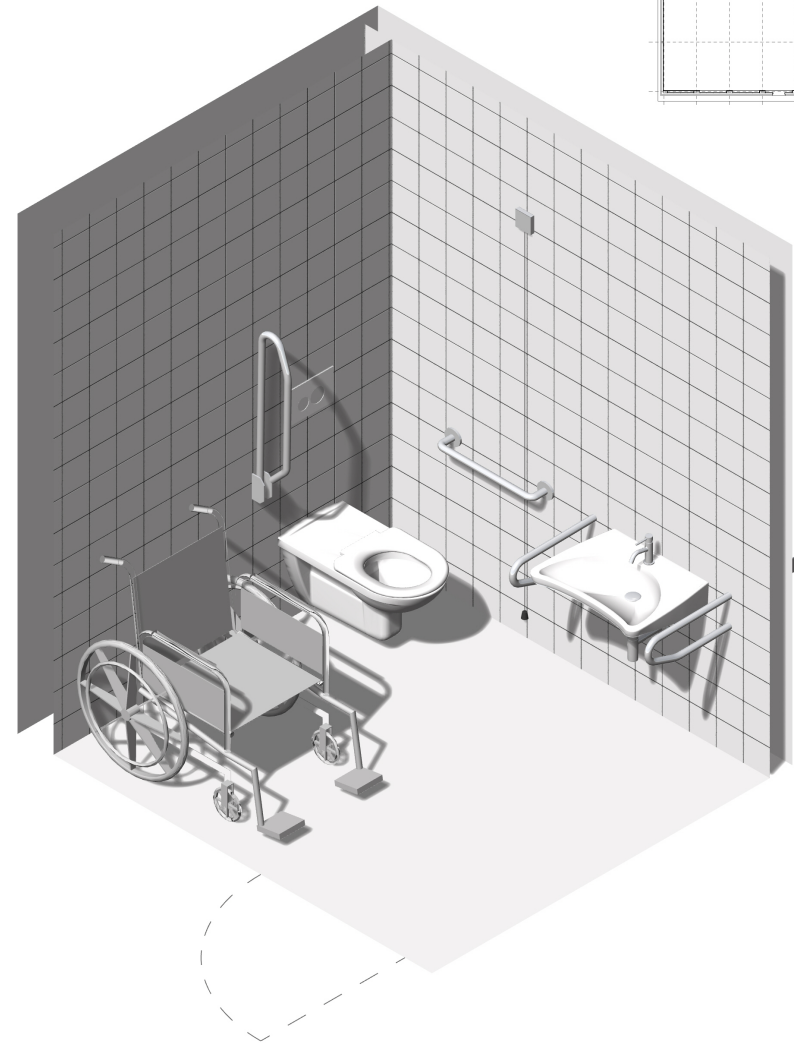
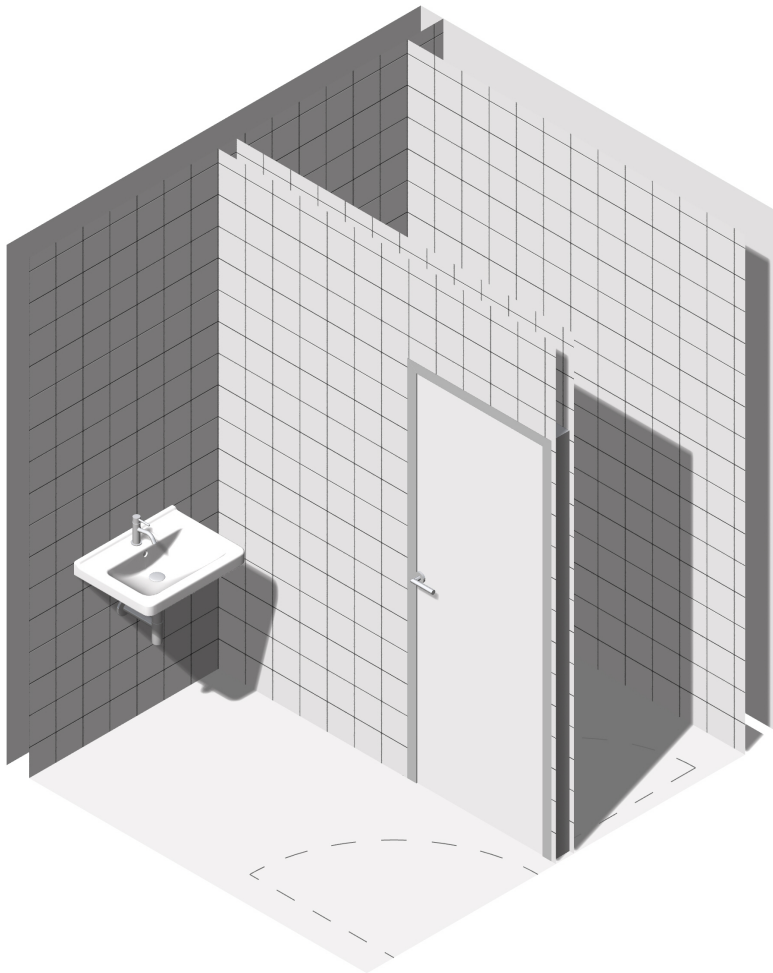
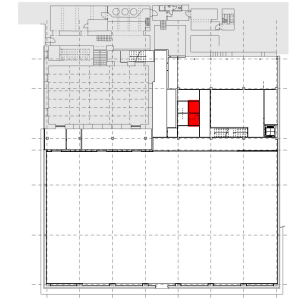
ŠATŇA
1NP



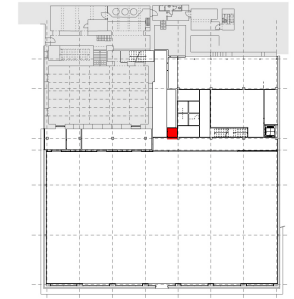
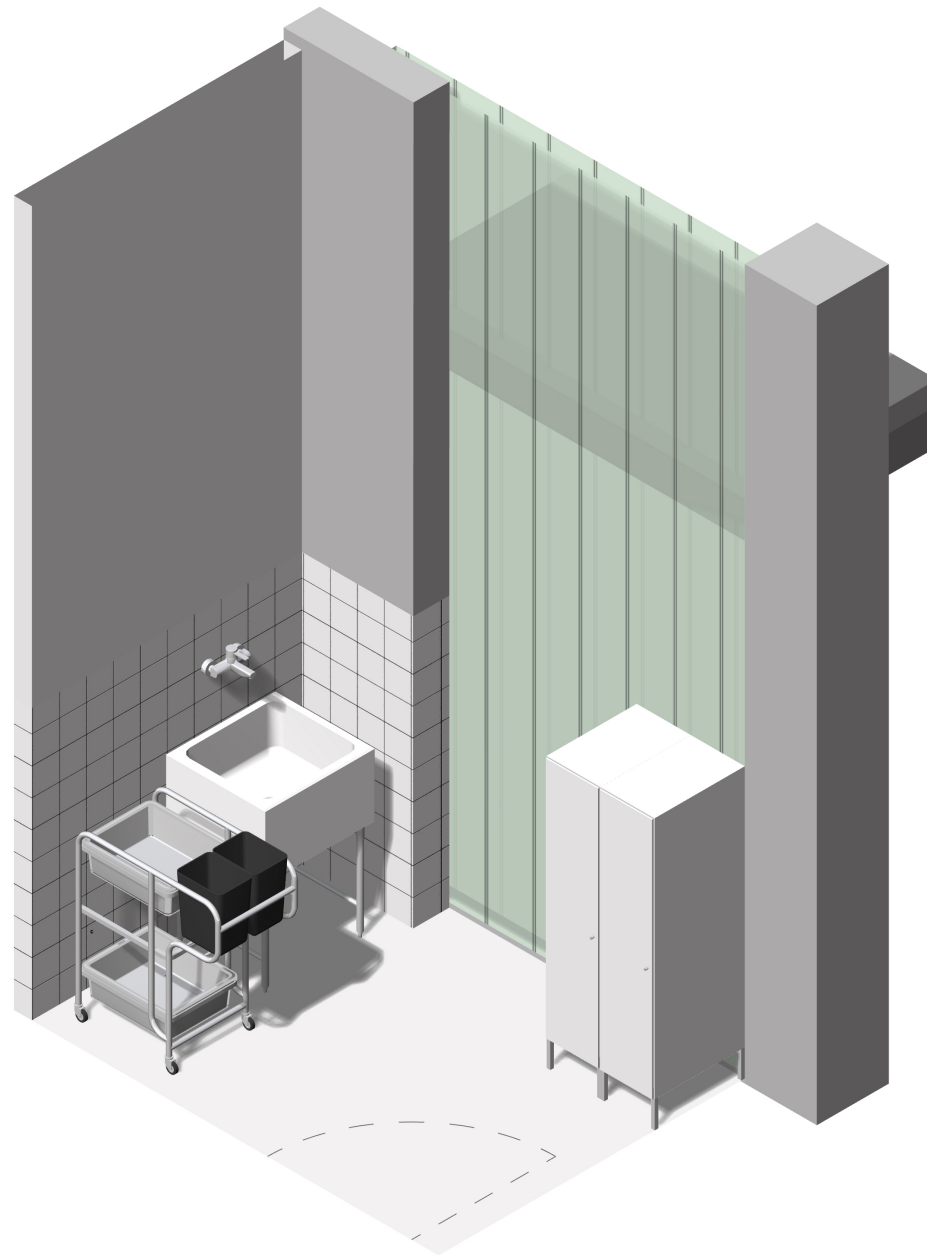
HYGIENA
1NP



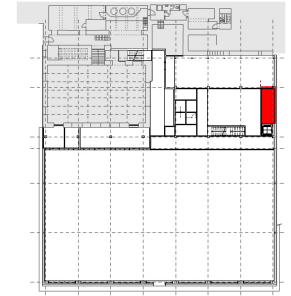
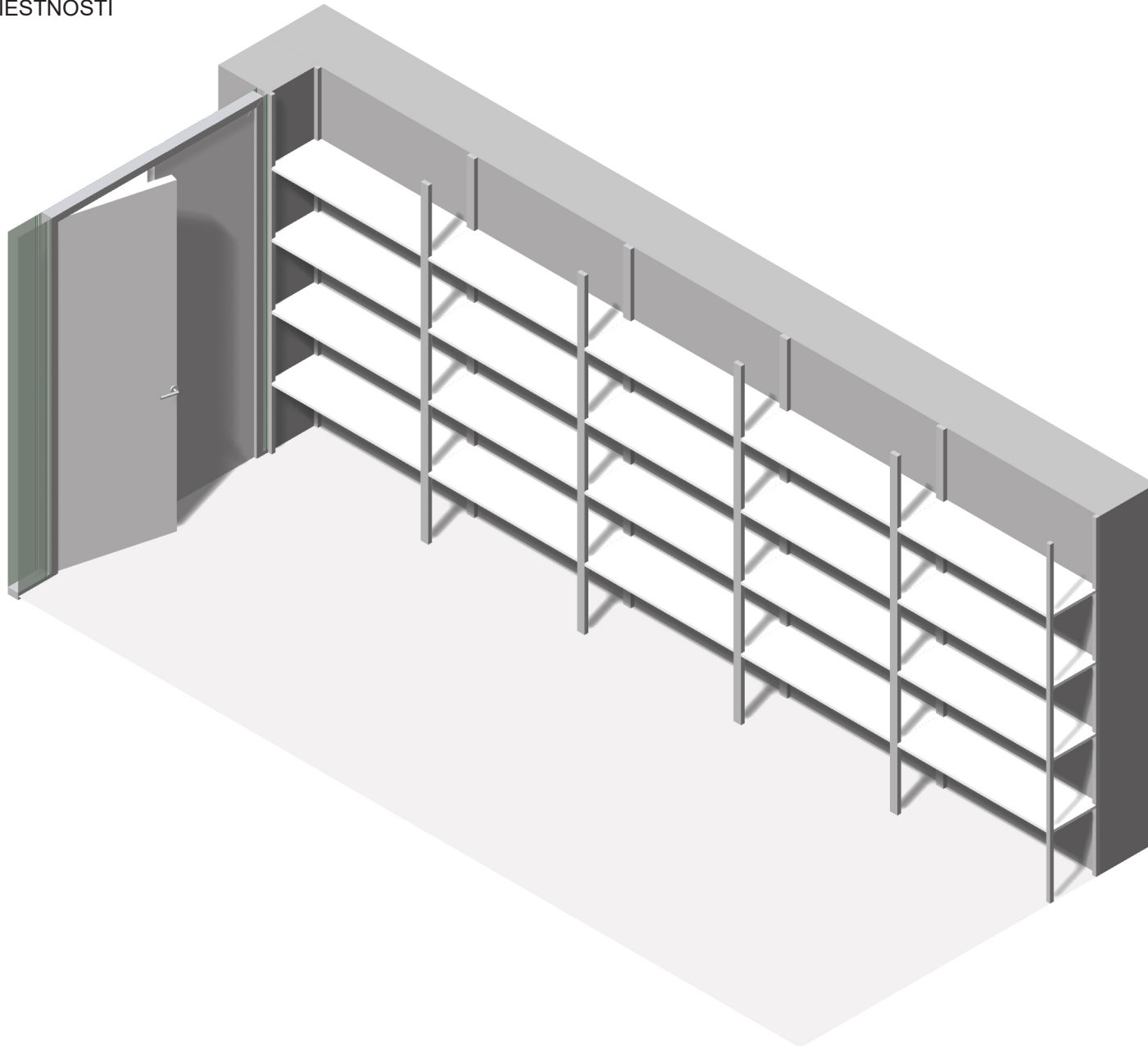
TOALETY
1NP



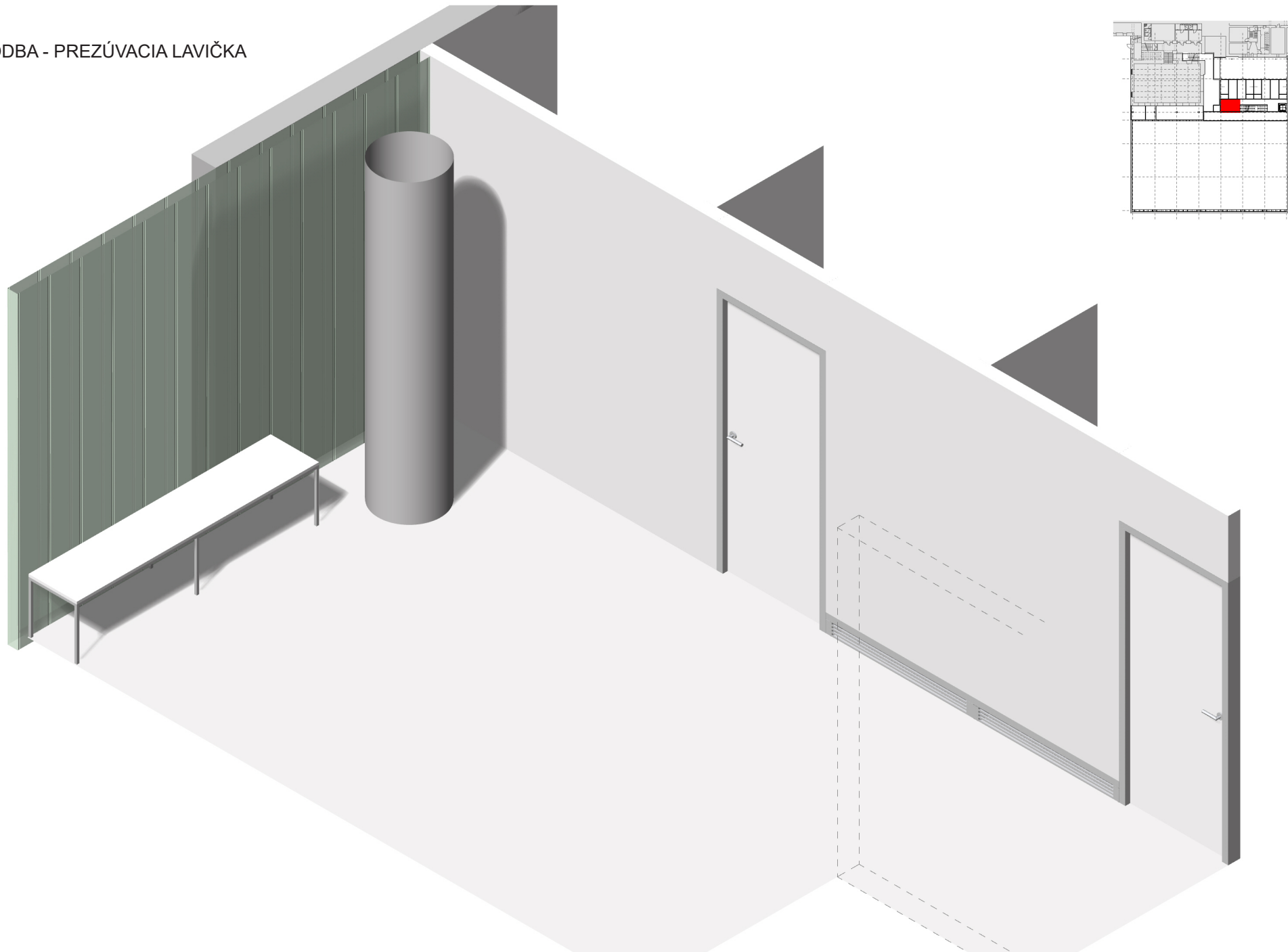
KUMBÁL
1NP



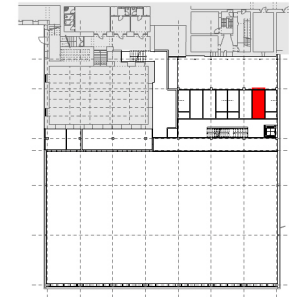
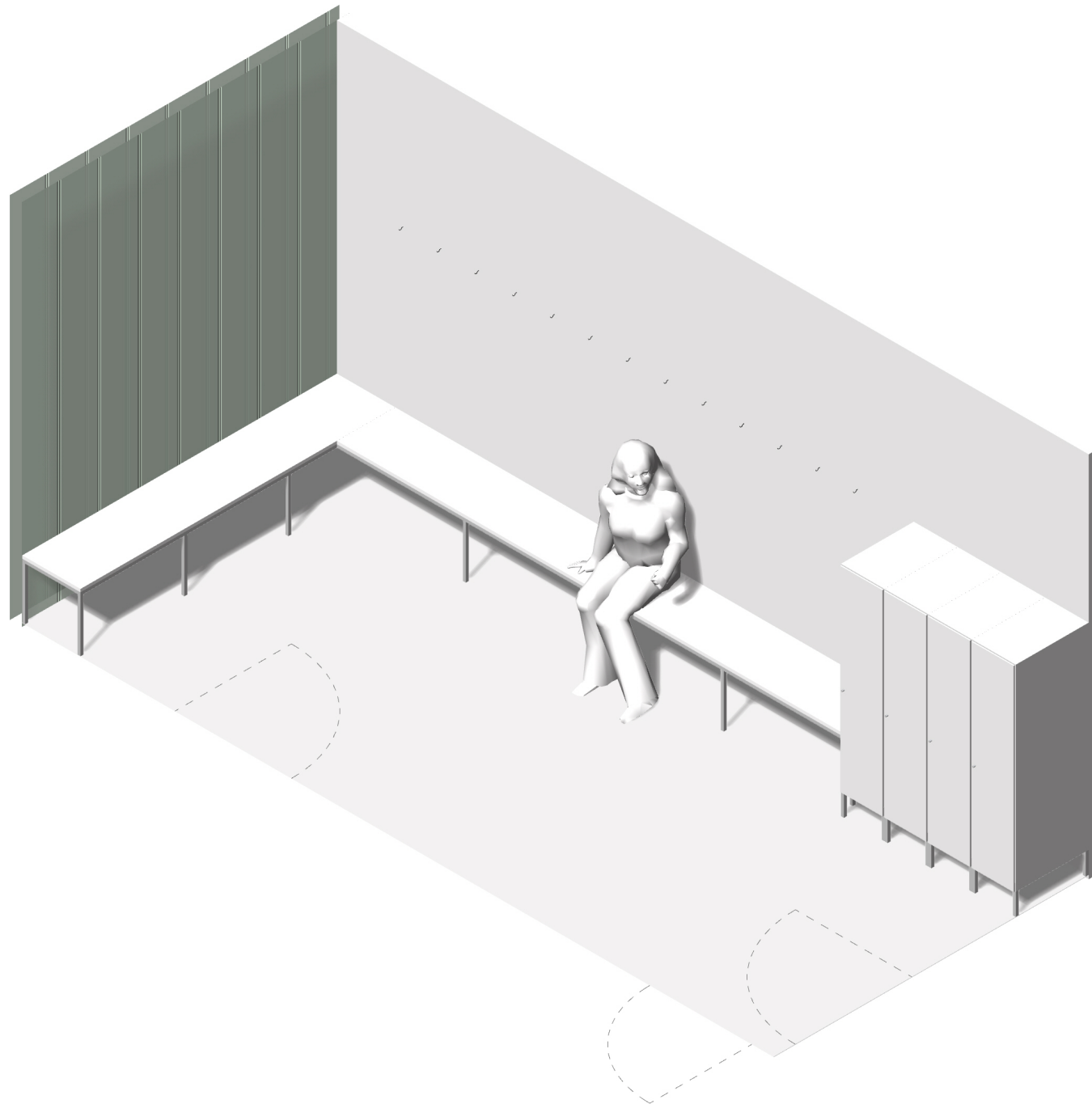
SKLAD LEZECKEJ MIESTNOSTI
1NP



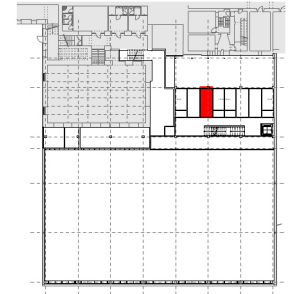
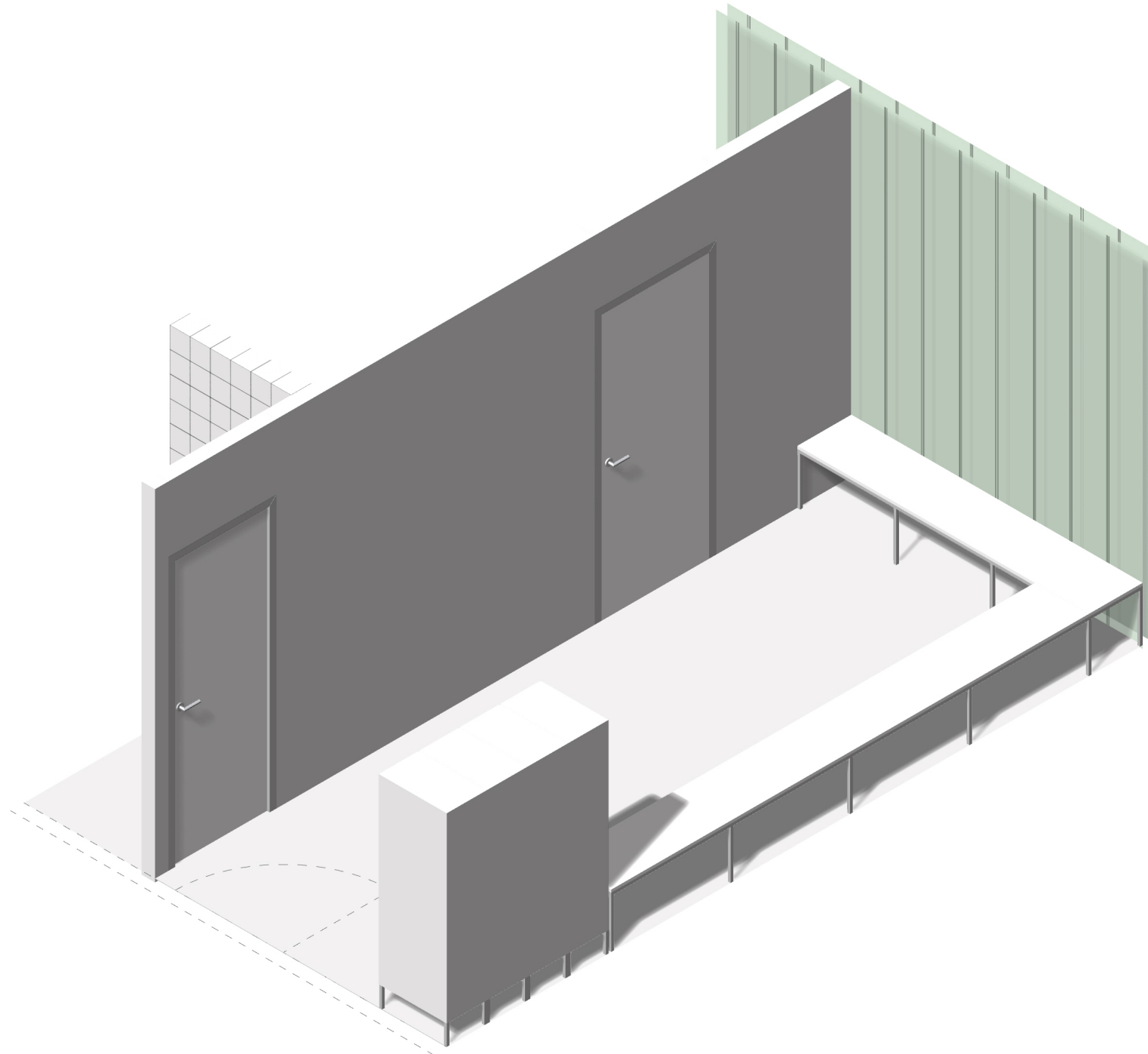
CHODBA - PREZÚVACIA LAVIČKA
2NP



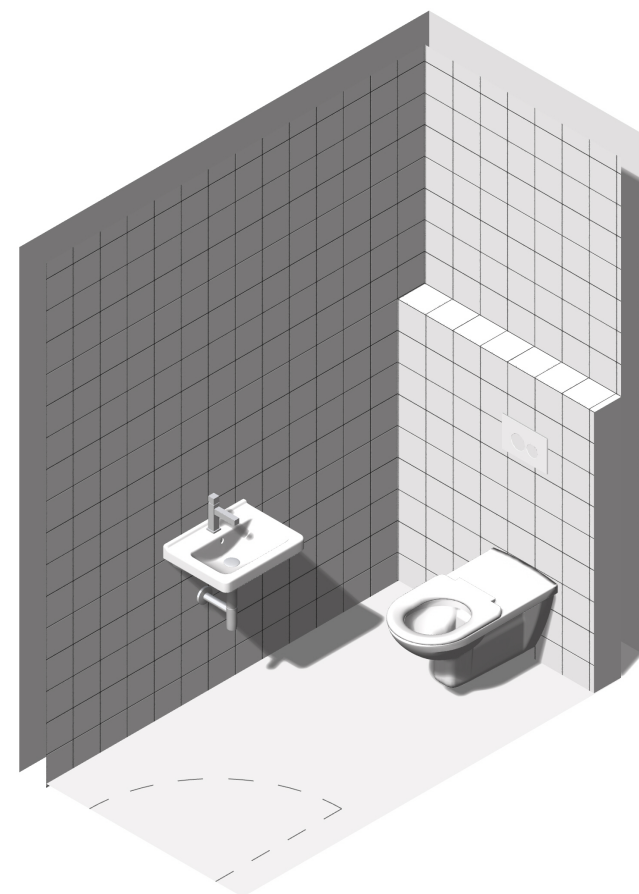
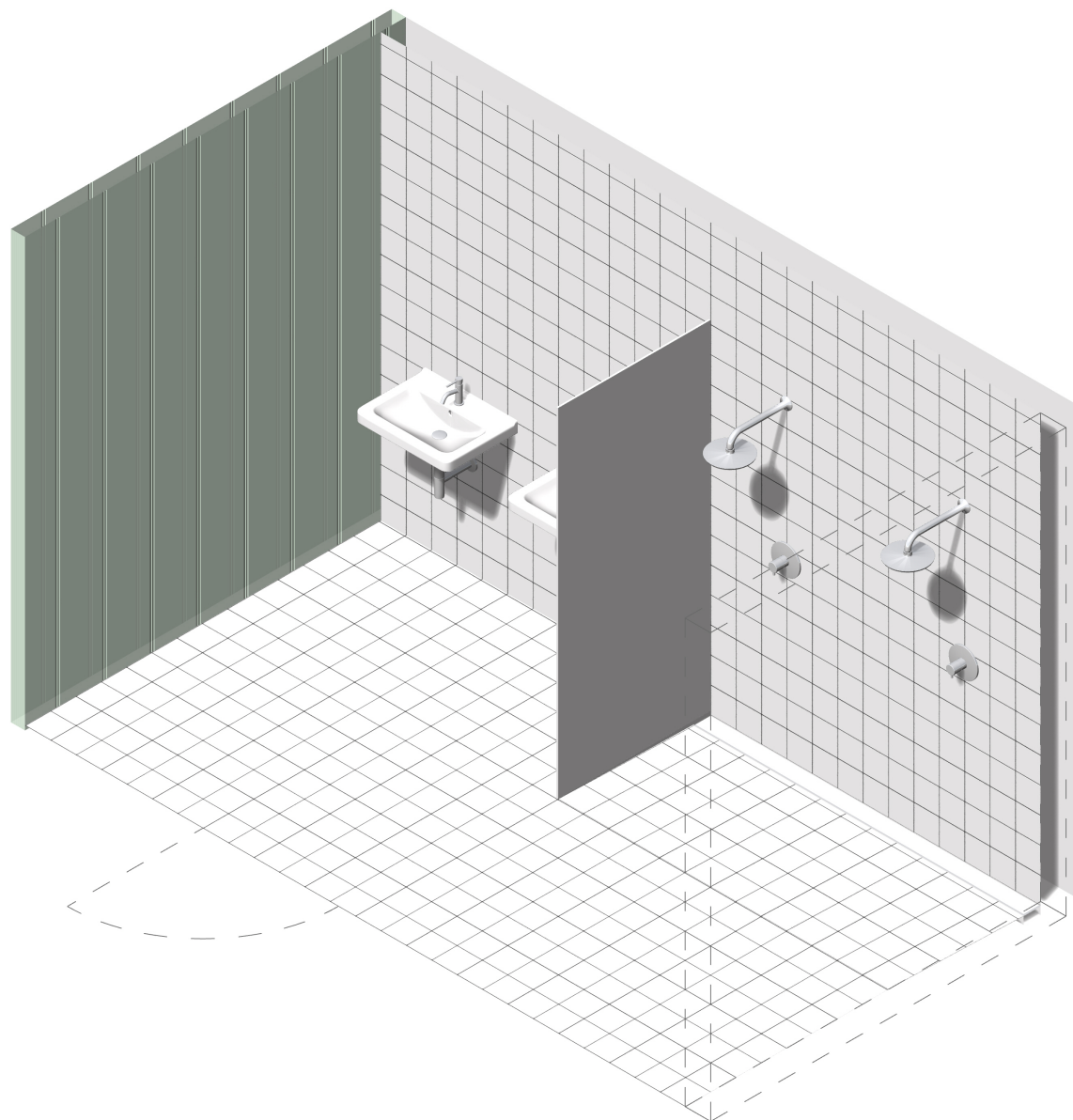
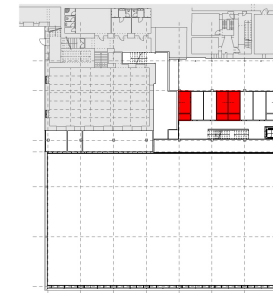
ŠATŇA
2NP



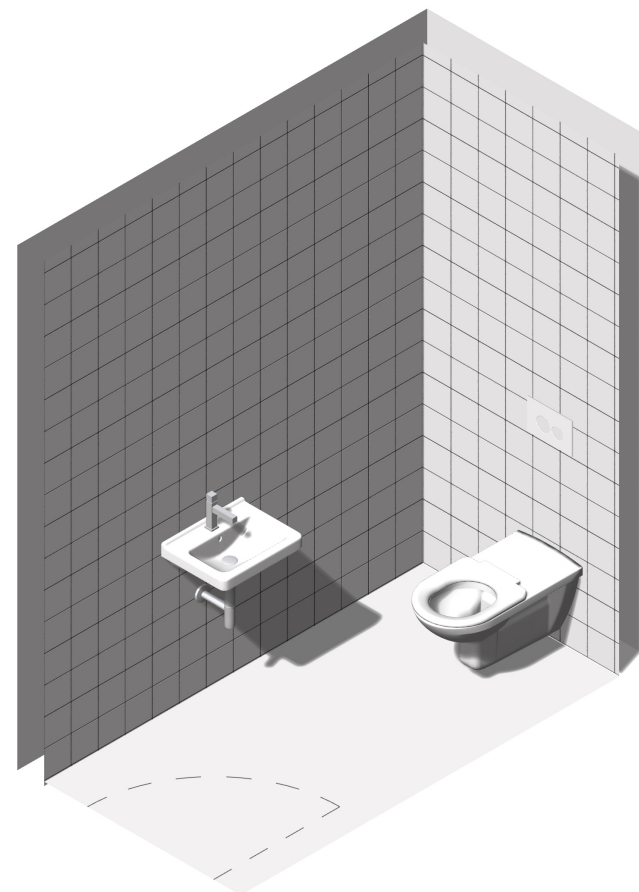
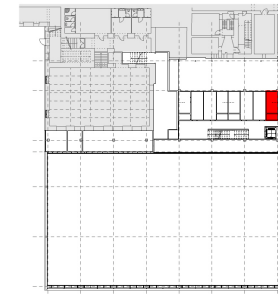
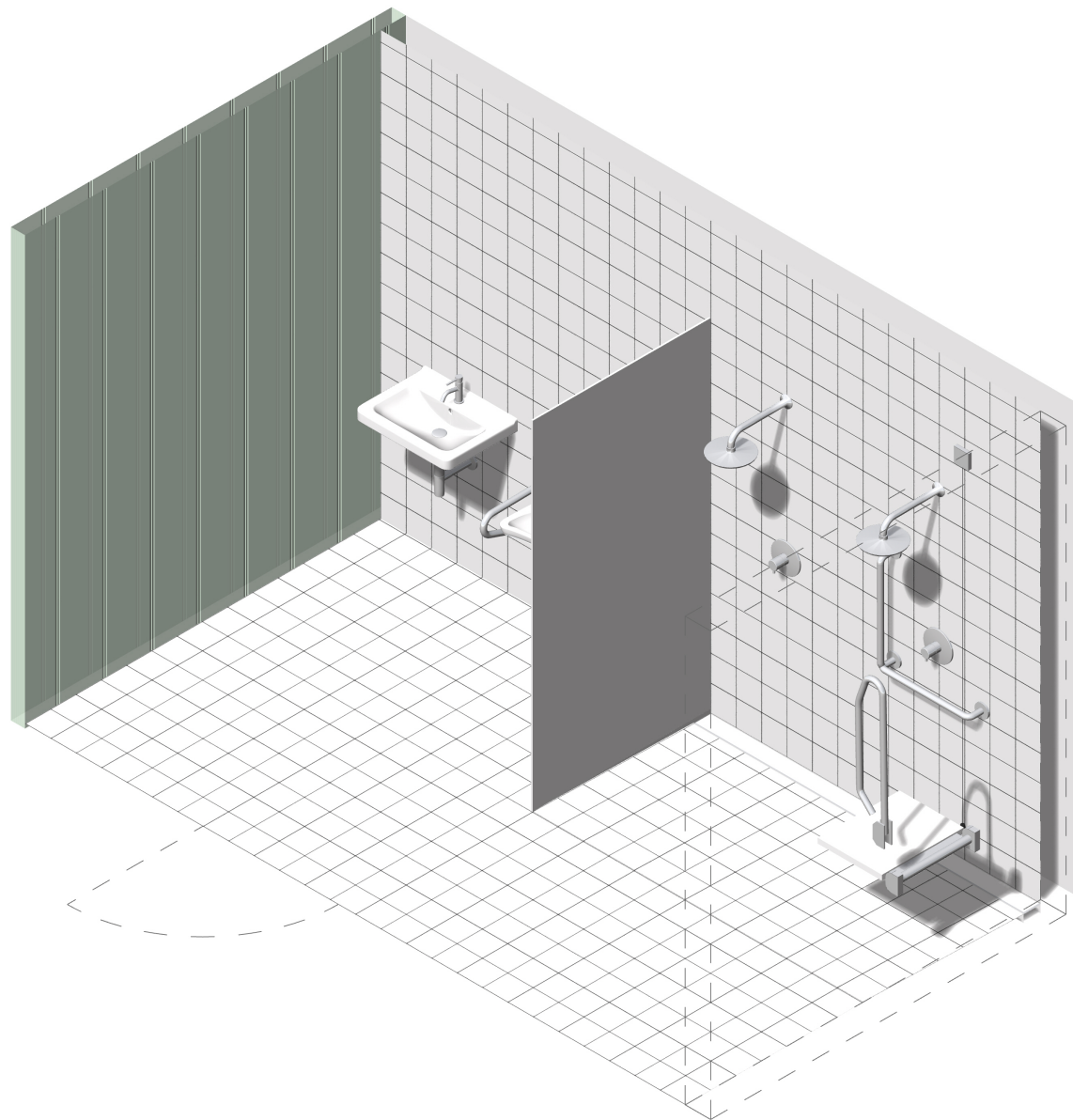
ŠATŇA
2NP



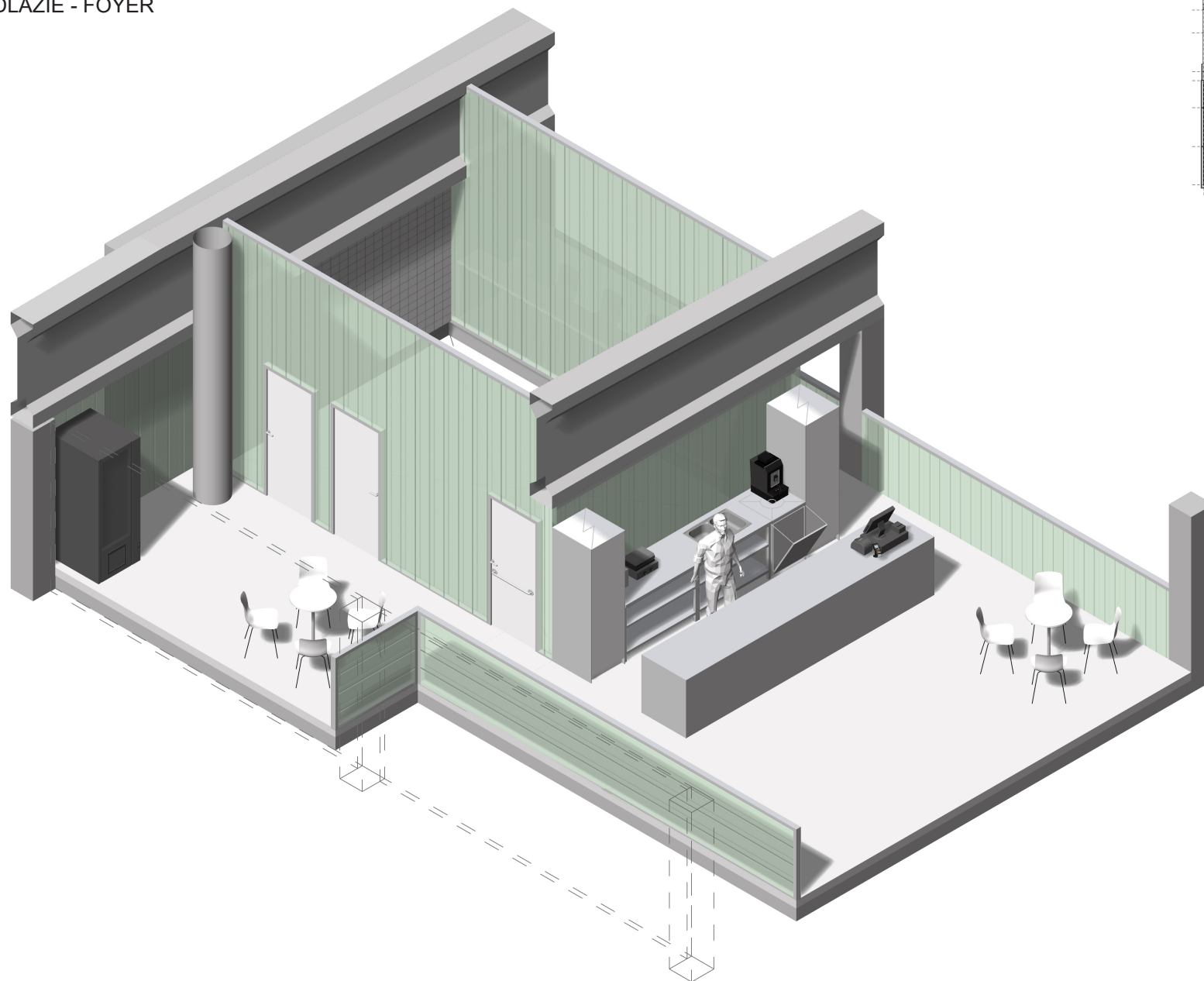
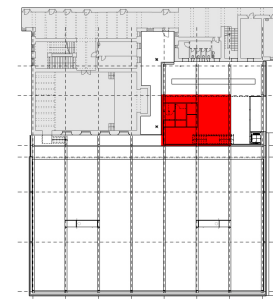
HYGIENA A TOALETA
2NP



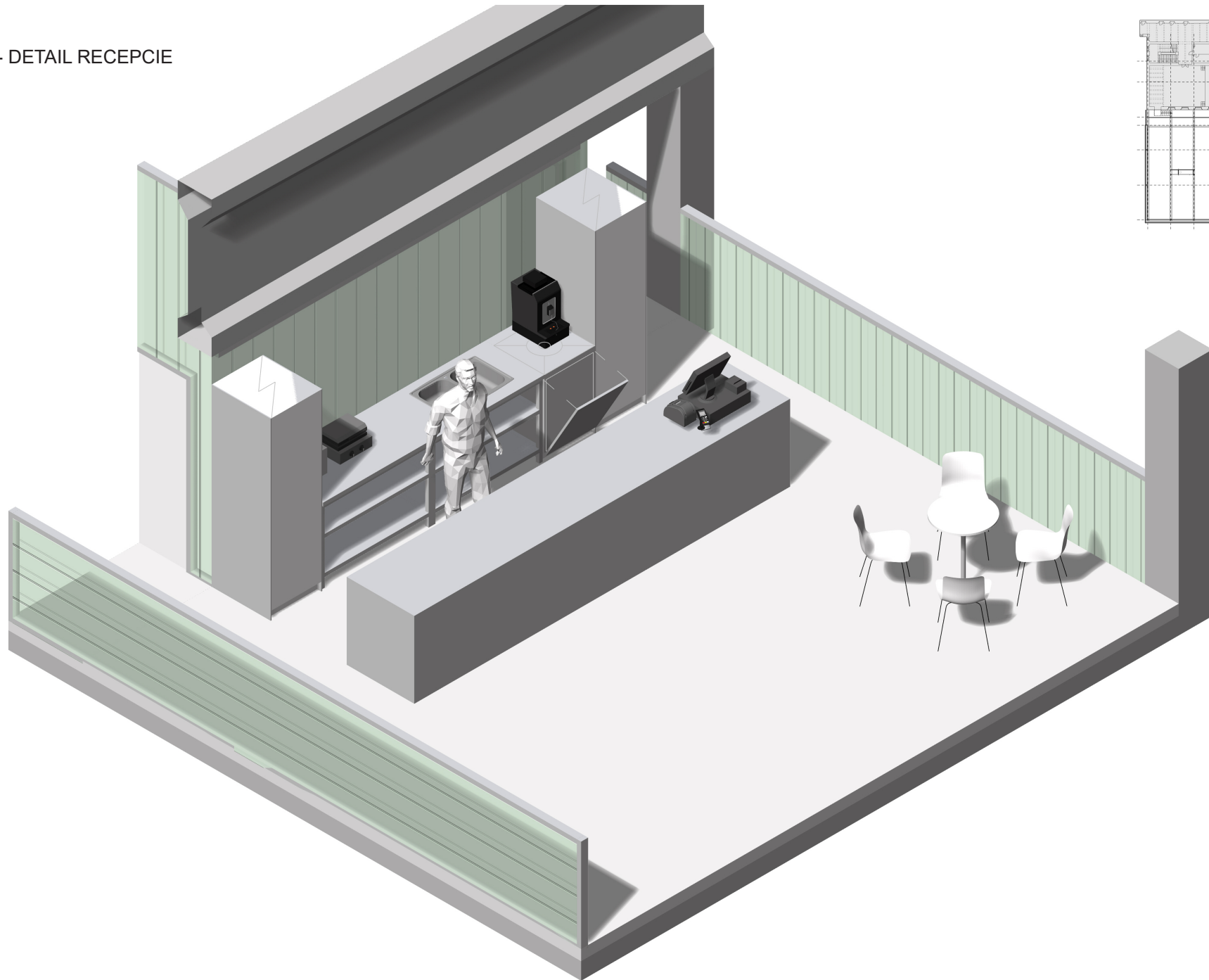
HYGIENA A TOALETA B
2NP



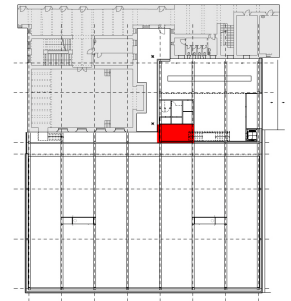
VSTUPNÉ PODLAŽIE - FOYER
3NP



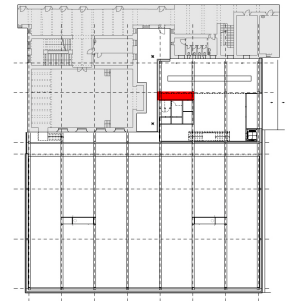
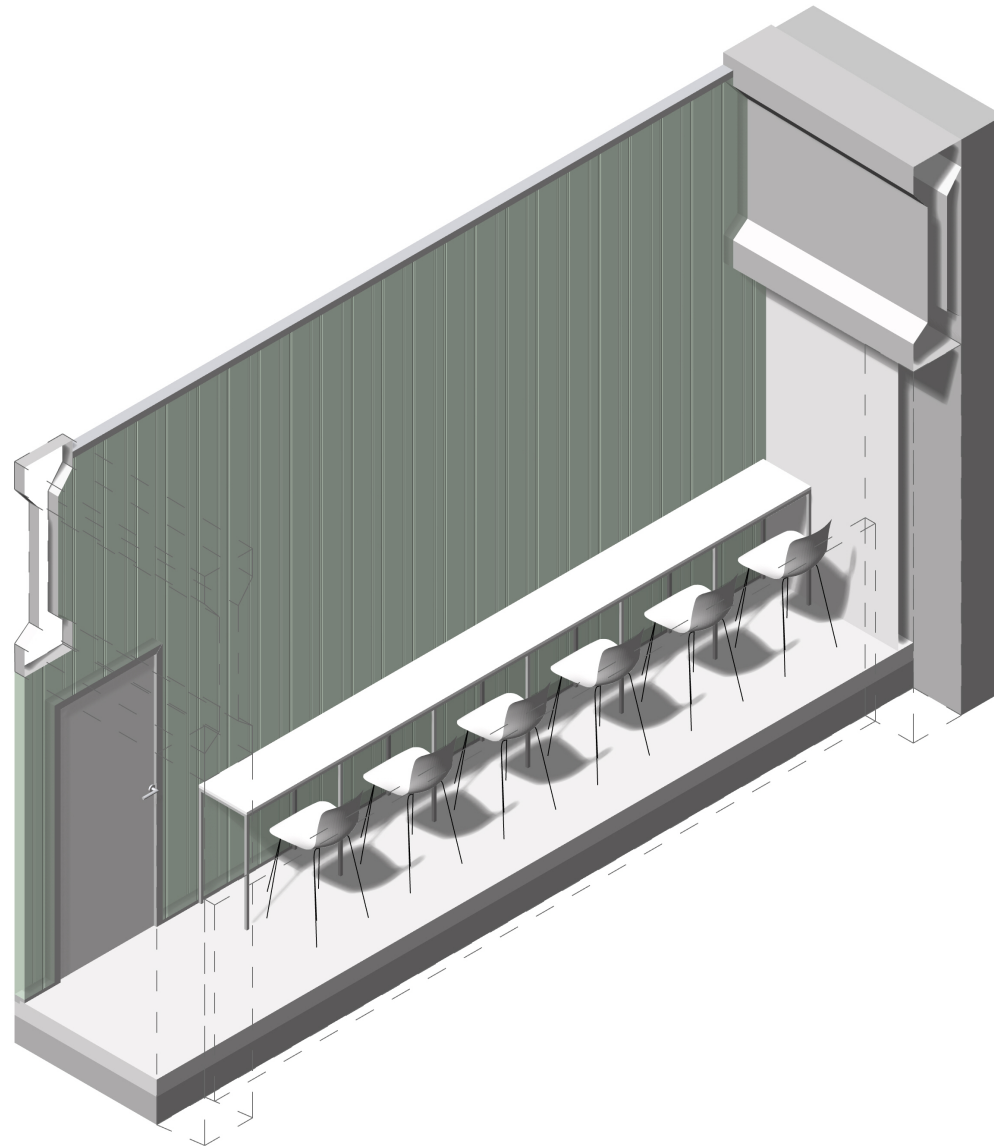
FOYER - DETAIL RECEPCIE
3NP



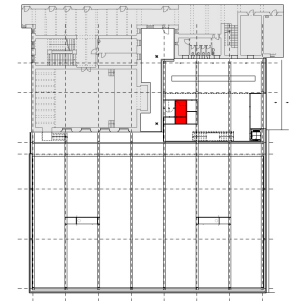
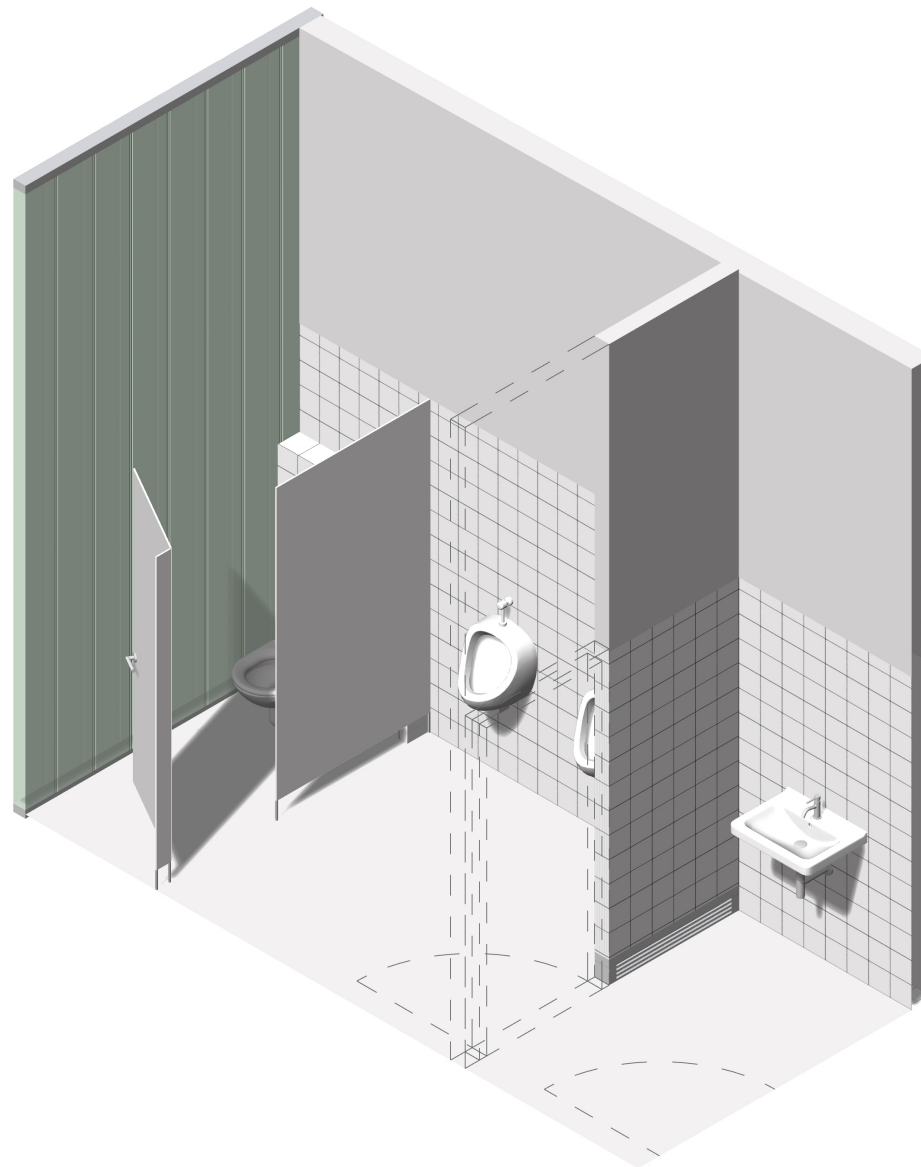
FOYER - DETAIL SEDENIA PRI TELOCVIČNI
3NP



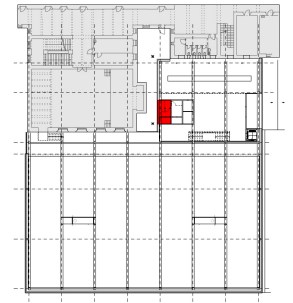
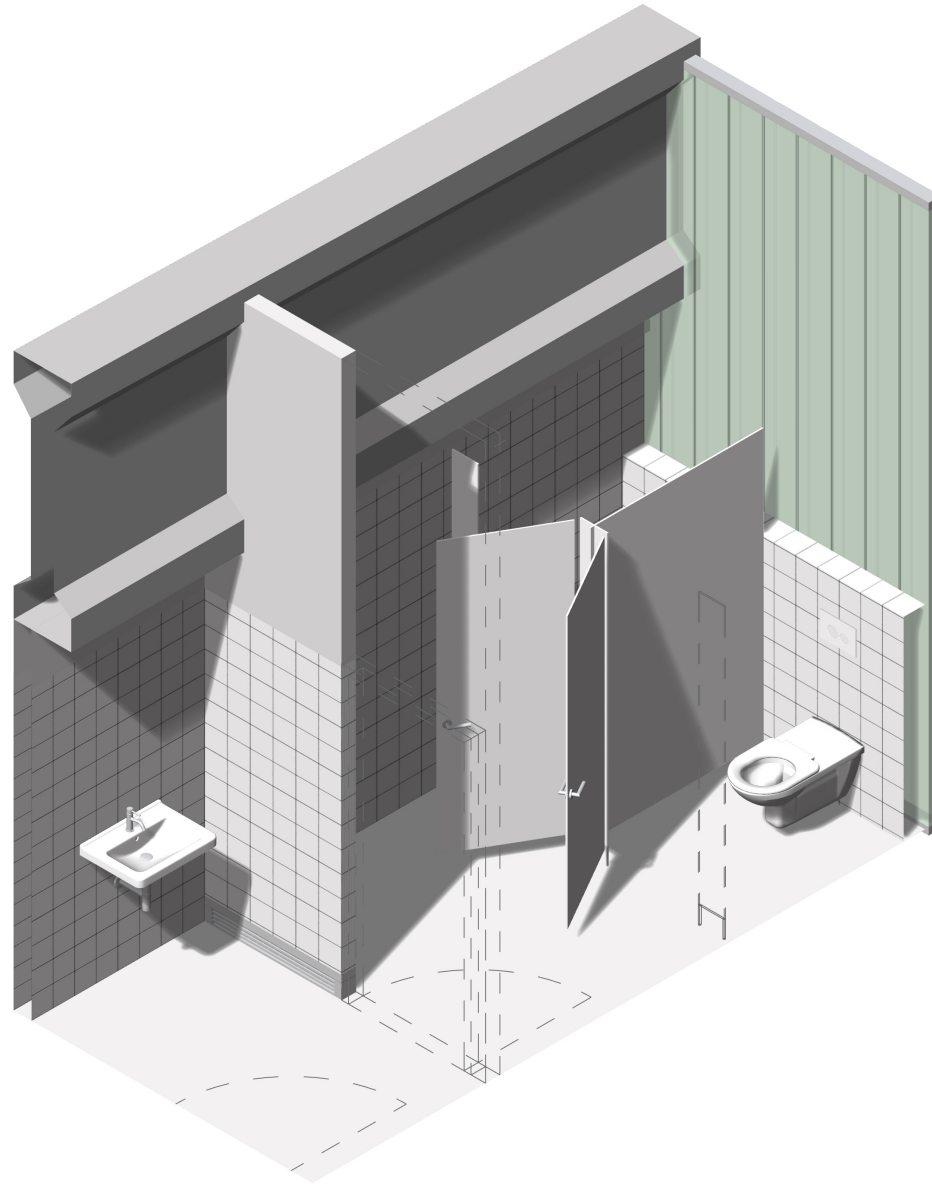
FOYER - DETAIL SEDENIA PRI LEZECKEJ MIESTNOSTI
3NP



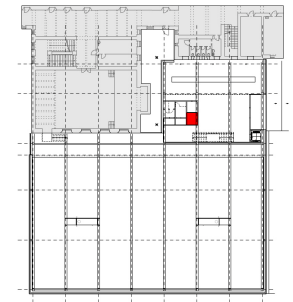
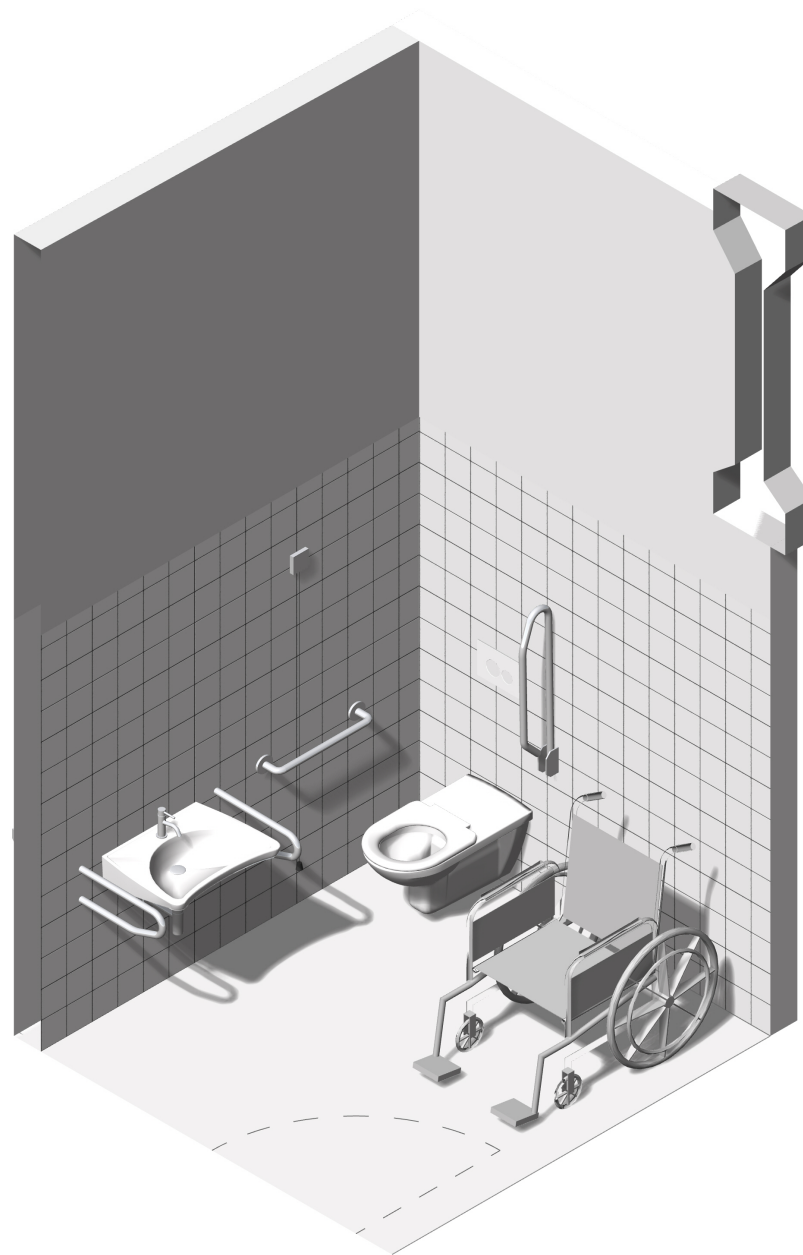
TOALETY MUŽI
3NP



TOALETY ŽENY
3NP



TOALETA PRE INVALIDOV
3NP



SKLAD BUFETU
3NP

